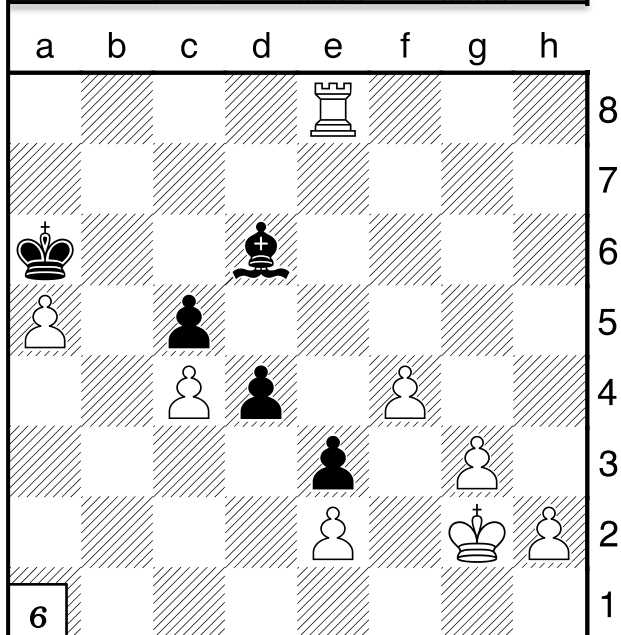
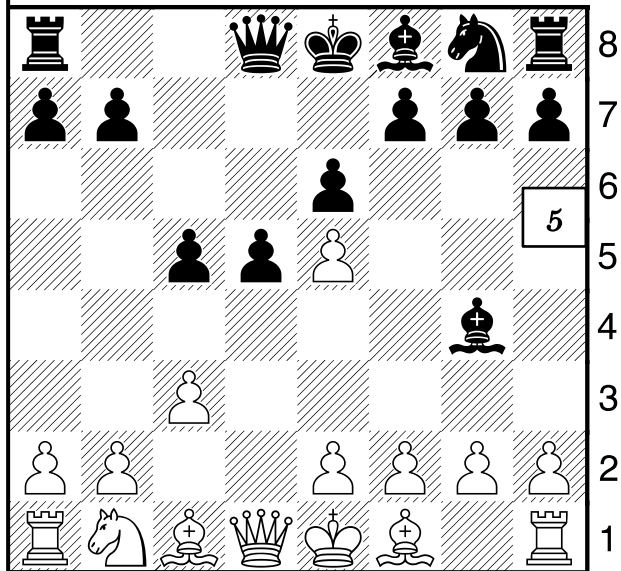
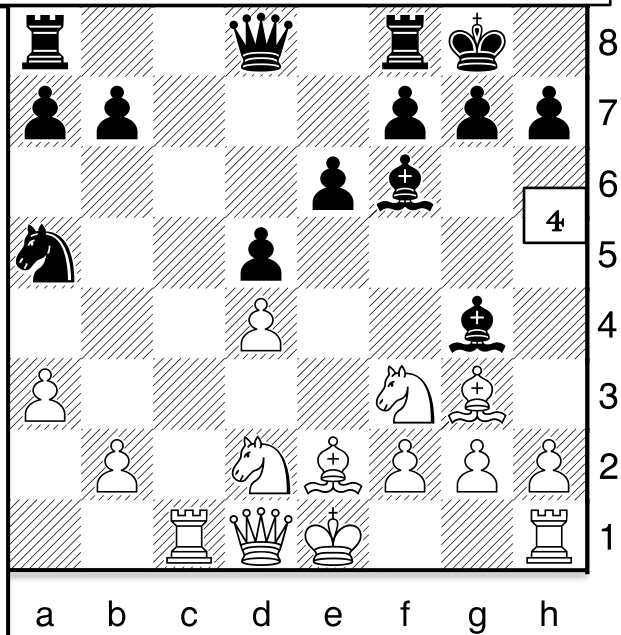


ANSWERS
IN BOXES !!

I explain the answers with what's called "notation".
Notation conventions:
K is king, Q is queen, N is knight, B is bishop & R is rook.
Squares are lower case letters first then numbers. Check is +, "x" is capture & checkmate is #.
Castling on the King side is "O-O" and on the Queen side is "O-O-O".
Notate your games!

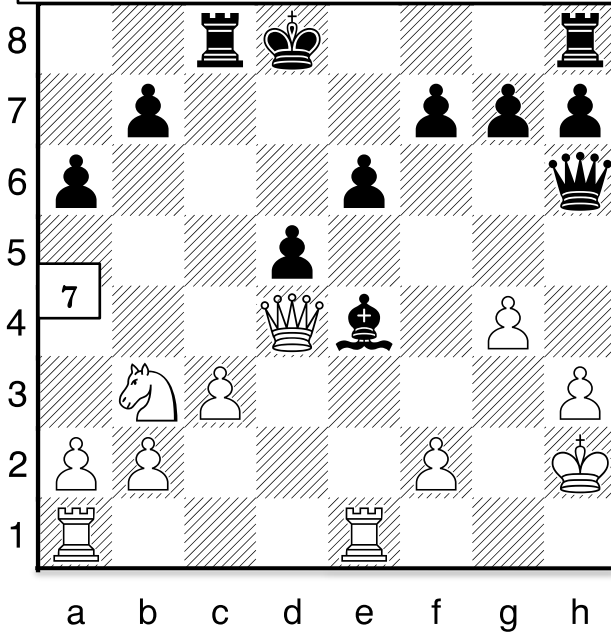
Is my K safe? Why did my opponent make that move?
Are my pieces safe? Do I have any checks, captures, threats of check and/or threats of capture?

- 1: Double attack: e5 wins a piece!
- 2: Re8+, BxRe8, RxBe8 mate !
- 3: Double attack Qh8+, Kc7, QxRf6 !
- 4: Double attack: Bc7 wins Na5!
- 5: Double attack: Qa4+ wins Bg4!
- 6: Pin: Re6 wins Bd6. If B moves RxK!



NAME: _____

Increase your creativity: complete my puzzles! Nov 10, 2019



***Maine Team
Championship
March 7:
Bangor***

These diagrams are pictures of the puzzles we do in class. I'd love it if you'd go over them with your child!

7: RxBe4 if d5xR then QxK: pawn on d5 is pinned!

8: Double attack: Qf7+ wins Re8!

9: Re4+ Nf4 blocks, either RxNf4# !

10: When you have multiple moves that are checks and/or captures order matters! If h2xBg3 black takes your Nd5.

Better is NxNf6+

because black has to get out of check. Now take the B!

11: Rc3 traps Q: QxRc3 QxQc3!

12: QxQ+g7, KxQg7 now Double attack: Re7+ wins Bd7!

Questions? Get on my weekly email list: email BruceHaffner@gmail.com, call 847-987-3091.

