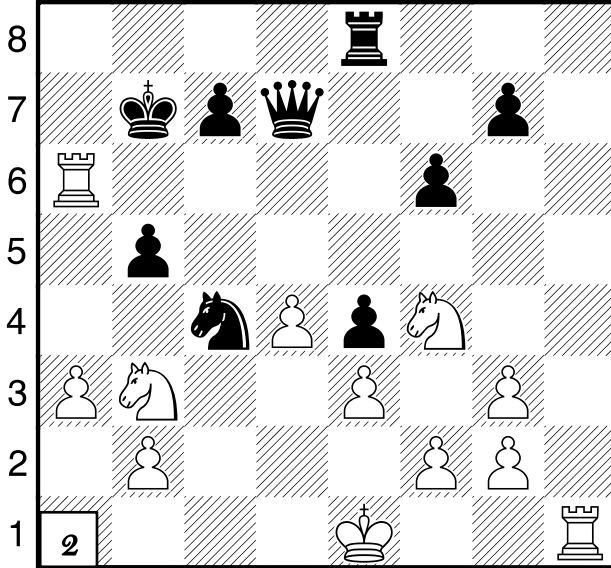
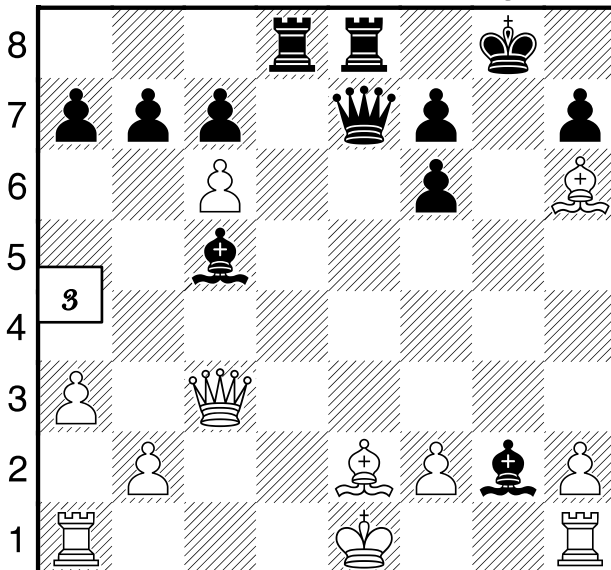


a b c d e f g h



a b c d e f g h



a b c d e f g h

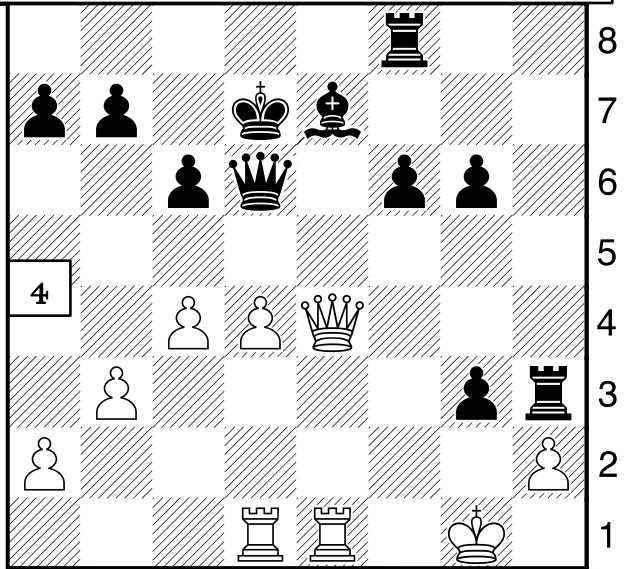
**ANSWERS**

1-11 are 3 moves.  
12-14 are 5 moves. 15&16 are 7 moves  
17 is 9 moves.  
18 is 11 moves!

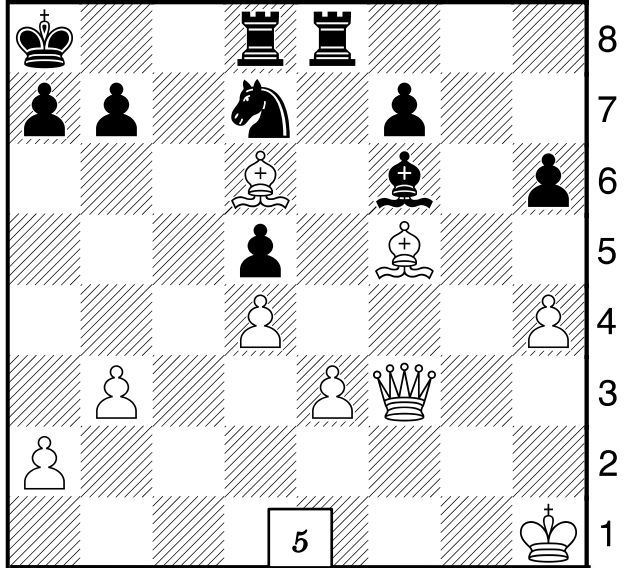
I explain the answers with what's called "notation".

Notation conventions:  
K is king, Q is queen, N is knight, B is bishop & R is rook. Squares are lower case letters first then numbers. Check is +, "x" is capture & checkmate is #. Castling on the King side is "O-O" and on the Queen side is "O-O-O". Notate your games!

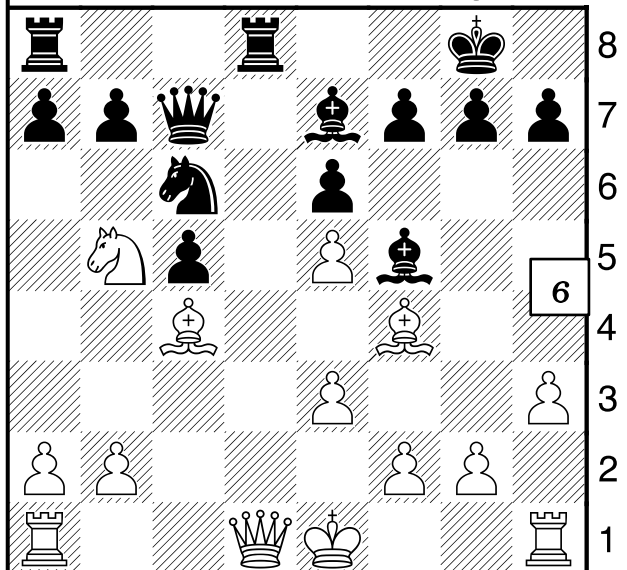
- 1: RxNf5 e6 pawn can't take back it is pinned!
- 2: Nc5+, Kb8, NxQd7+!
- 3: QxBc5? No: Qg3+, Kh8, Qg7#!
- 4: Qg4+, f4, QxRh3.
- 5: BxNd7, RxBd7, QxBf6.
- 6: NxQc7, RxQd1+, RxRd1.



a b c d e f g h



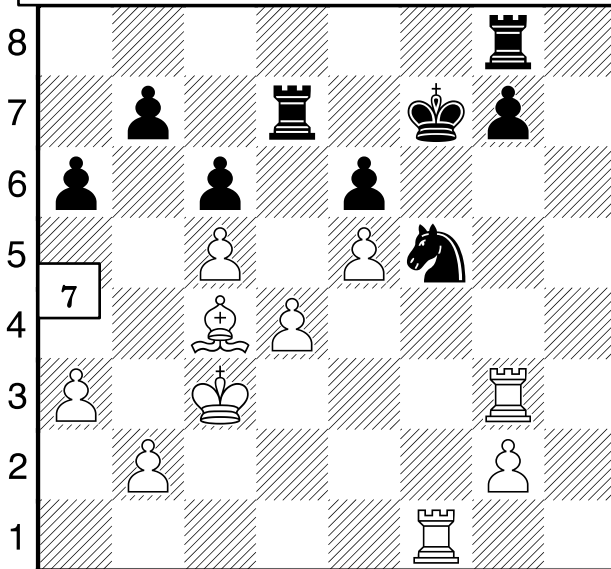
a b c d e f g h



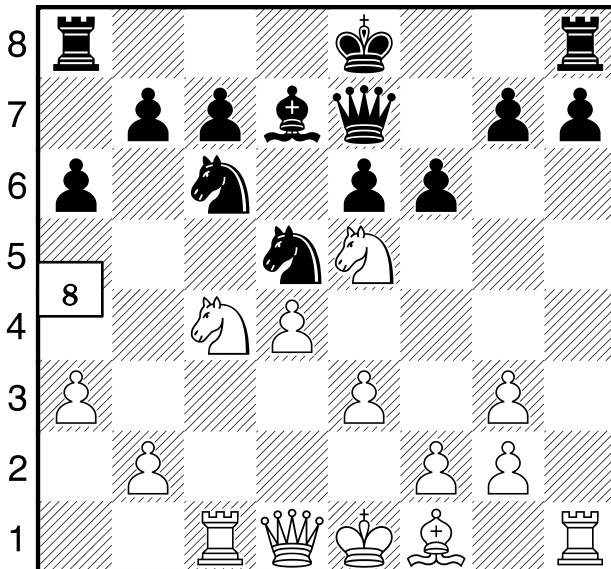
a b c d e f g h

NAME: \_\_\_\_\_

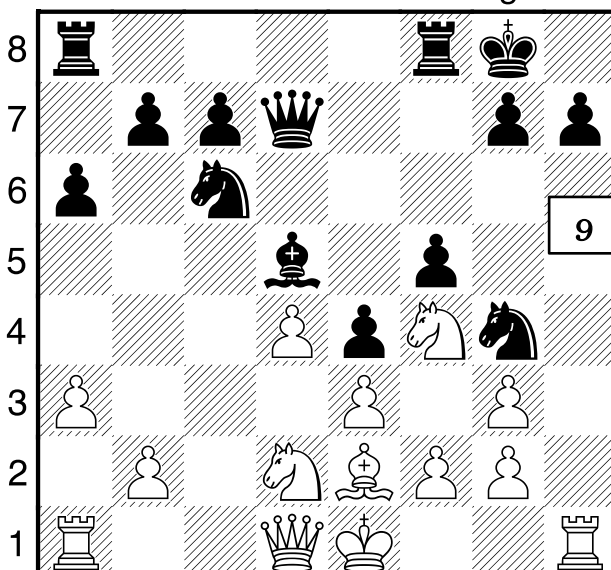
Increase your creativity: complete my puzzles! Oct 18, 2019



a b c d e f g h



a b c d e f g h



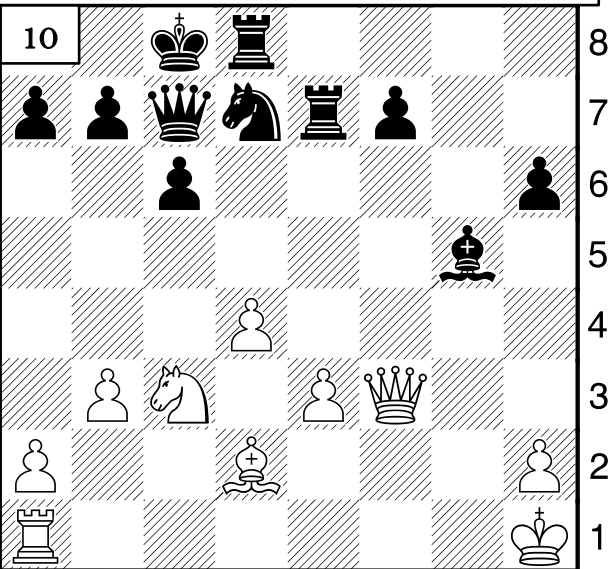
**Maine Team  
Championship  
March 7:  
Bangor**

7-11 are 3 moves.  
12-14 are 5 moves.  
15&16 are 7  
moves 17 is 9  
moves. 18 is 11  
moves!

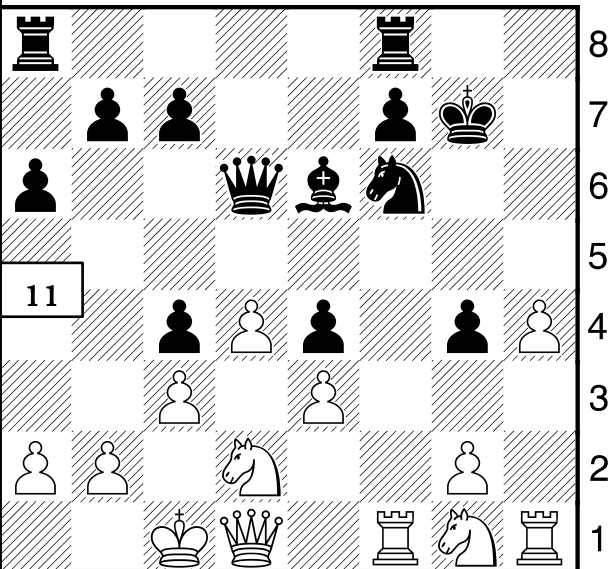
These diagrams are  
pictures of the  
puzzles we do in  
class. I'd love it if  
you'd go over them  
with your child!

7: see 1!  
8: Ng6! If pawn  
takes RxR! Or  
Qh5+.  
9: NxNd5! If  
QxNd5 white  
pins blacks Q to  
his K with Bc4!  
10: Tricky fork!  
Nd5! If pawn  
takes knight  
white pins  
black's Q to his  
K with Rc1!  
11: Wow:  
RxNf6! If K  
takes white has  
royal fork  
Nxe4! So black  
plays Qe7 then  
white Rf4.  
12: BxNe4,  
d5xBc4, Bd6!  
Qe8, BxRf8!

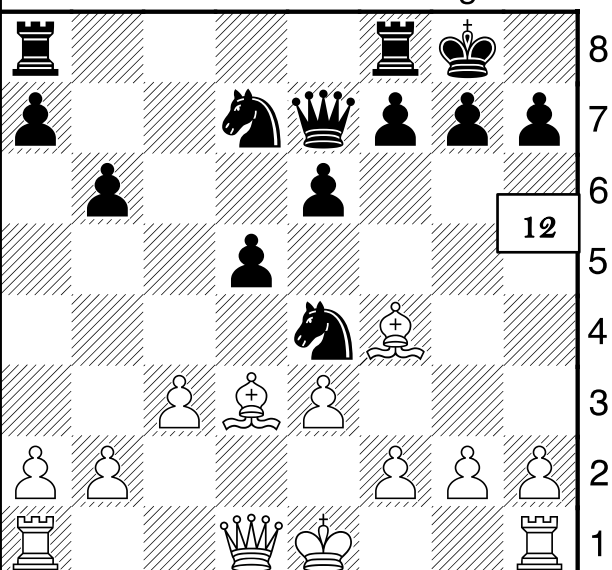
Questions? Cut  
answers out kids  
then do! Get on my  
weekly email list:  
email  
BruceHaffner@  
gmail.com, call 847-  
987-3091.



a b c d e f g h

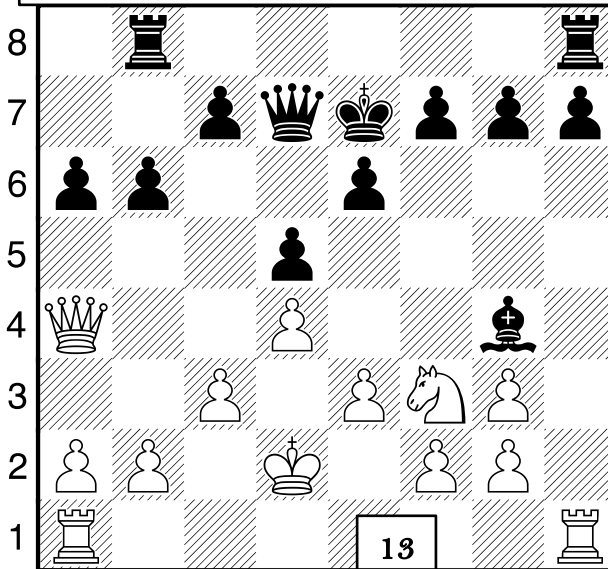


a b c d e f g h

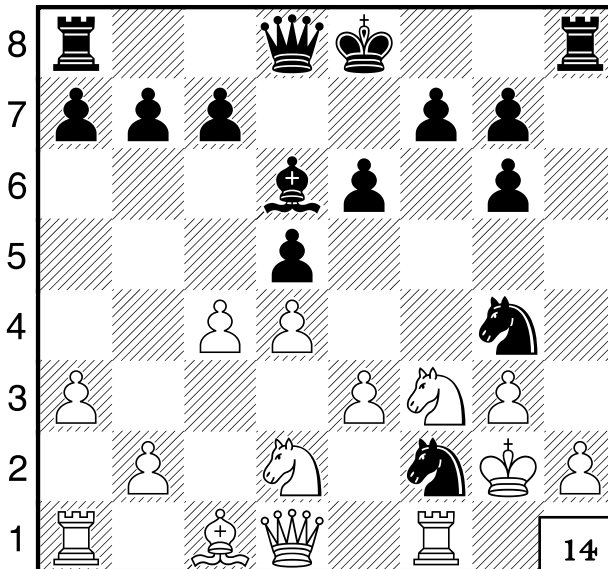


NAME: \_\_\_\_\_

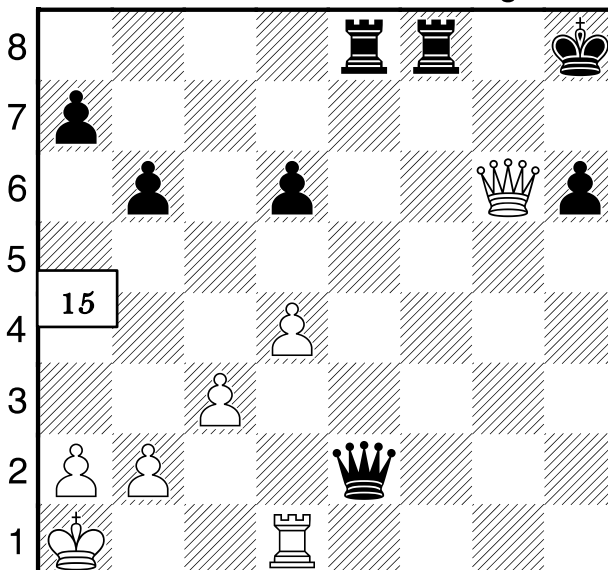
Increase your creativity: complete my puzzles! Oct 18, 2019



a b c d e f g h



a b c d e f g h



a b c d e f g h

Look for forcing moves! These are checks, captures, threats of each! If you have two or more consider their correct order! Note how in 14 skipping Qa4+ costs you your Q!

13: QxQd7, KxQd7, Ne5+, Kd6, NxBg4!

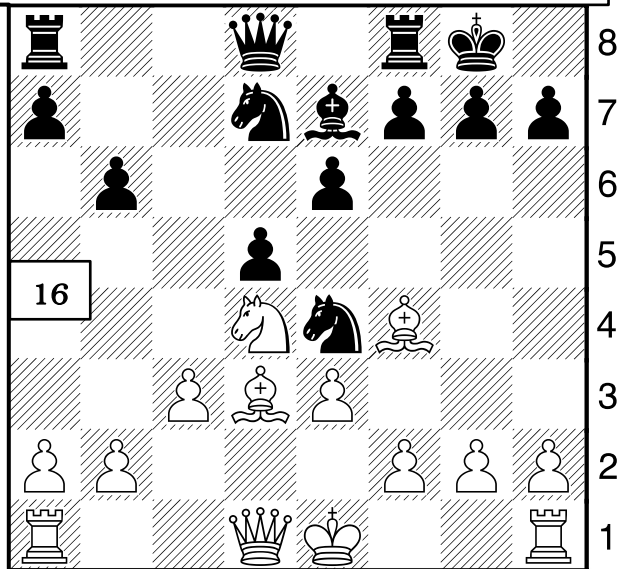
14: If RxNf2 black plays Nxe3 royal fork!! So Qa4+, c6, RxNf2, NxRf2, KxNf2.

15: Qxh6+, Kg8, Rg1+, Qg2, RxQg2+, Kf6, Rg7#.

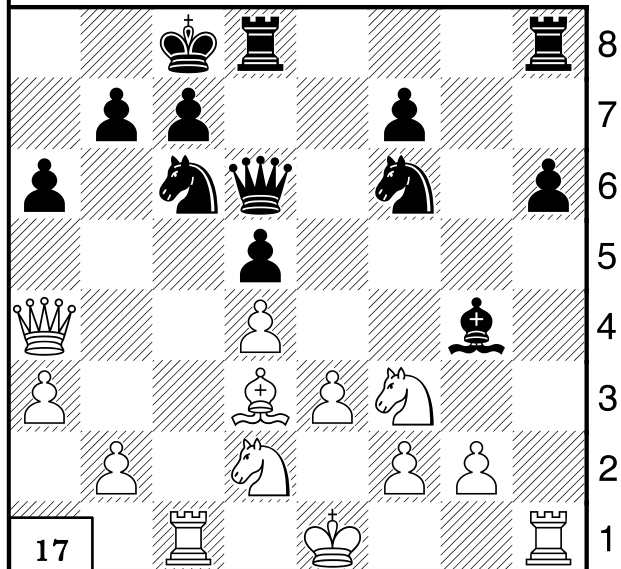
16: See 12! BxNe4, d5xBe4, Nc6, Qe8, NxBe7, QxNe7, Bd6! Qe8, BxRf8!

17: RxNc6, QxRc6, QxQc6, b7xQc6, Ne5, Kb7, Nxf7, h5, NxRd8!

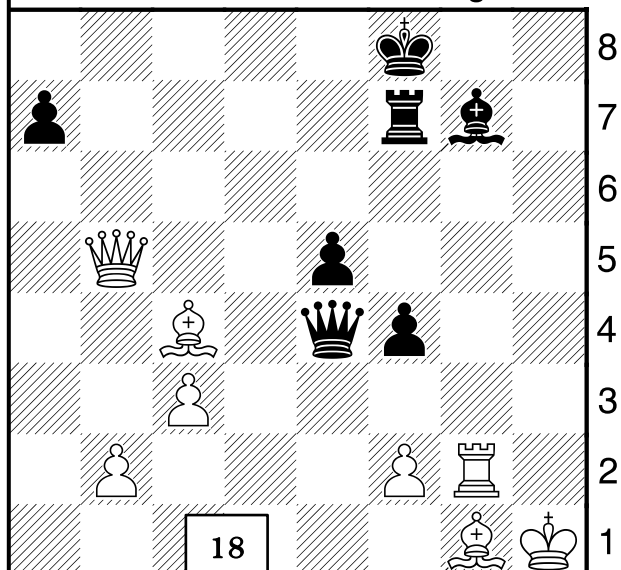
18: Qb8+, Ke7, Qc7+, Ke8, Bb5+, Qc6, BxQc6+, Rd7, QxRd7, Kf8, QxBg7#!



a b c d e f g h



a b c d e f g h



a b c d e f g h