

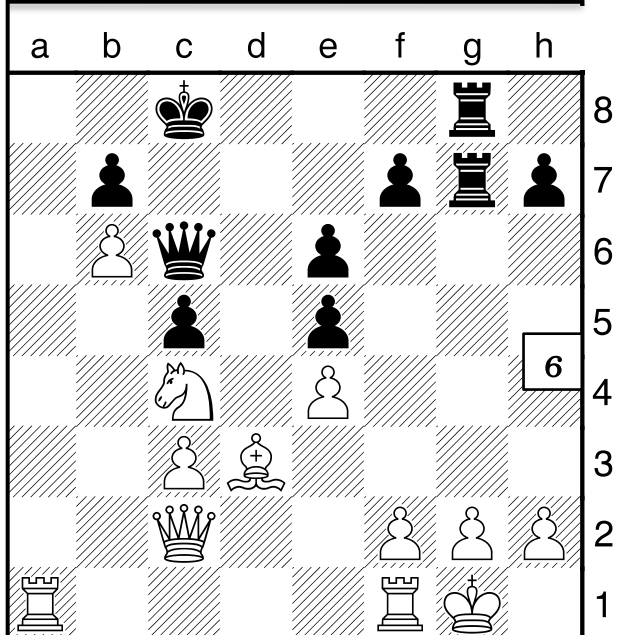
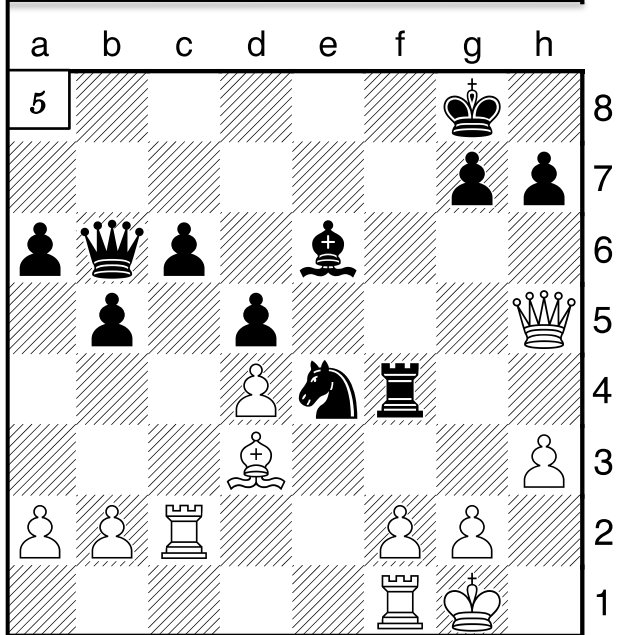
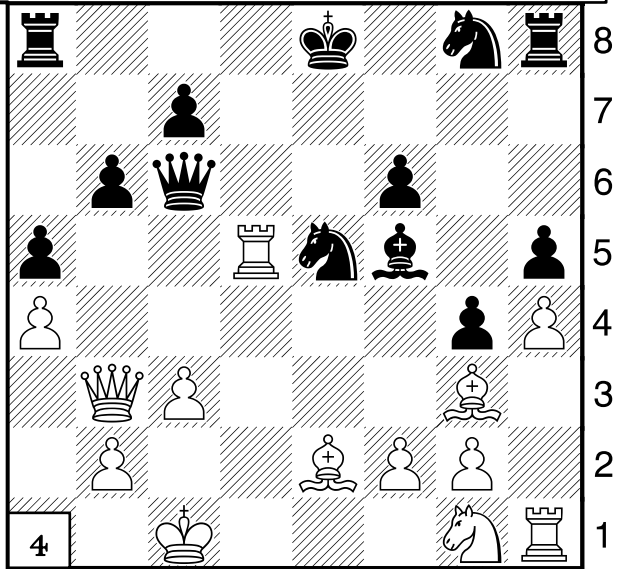
ANSWERS
BELOW !!

I explain the answers with what's called "notation".
Notation conventions: K is king, Q is queen, N is knight, B is bishop & R is rook. Squares are lower case letters first then numbers. Check is +, "x" is capture & checkmate is #.

Castling on the King side is "O-O" and on the Queen side is "O-O-O".

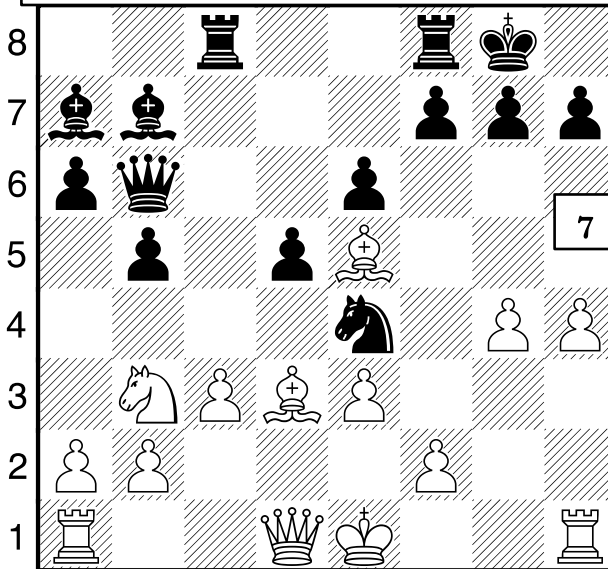
Notate your games! Is my K safe? Why did my opponent make that move? Are my pieces safe? Do I have any checks, captures, threats of check and/or threats of capture? What order is best?

Double Attacks!
1: Nc6+ attacks K & R (double attack with a N is a fork), Kd6, NxRb8!
2: Rc8+, Kd7, RxNb8!
3: A skewer makes piece attacked move winning what's behind it: Qg4+, Ke5, QxRc8!
4: Bb5, QxBb5, QxQb5!
5: Qe8+, Rf8, QxBc6+!
6: Ra8+, Kd7, Nxe5+!

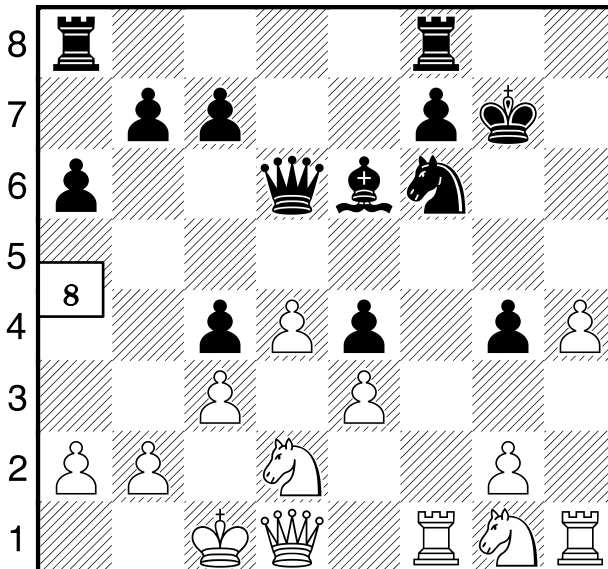


NAME: _____

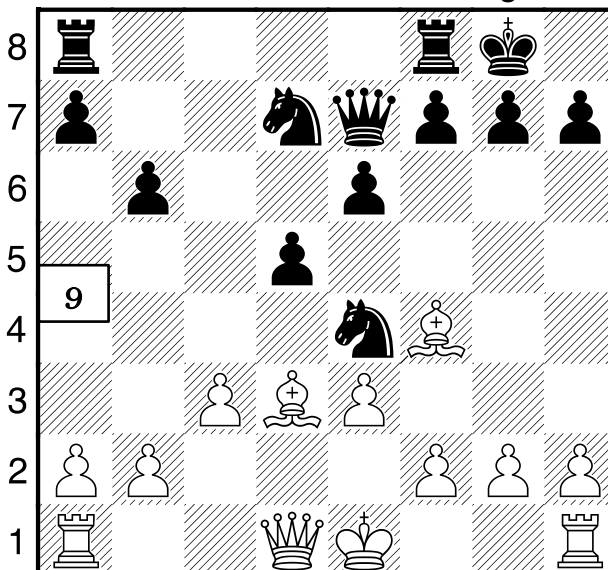
Increase your creativity: complete my puzzles! Dec 14, 2019



a b c d e f g h



a b c d e f g h



a b c d e f g h

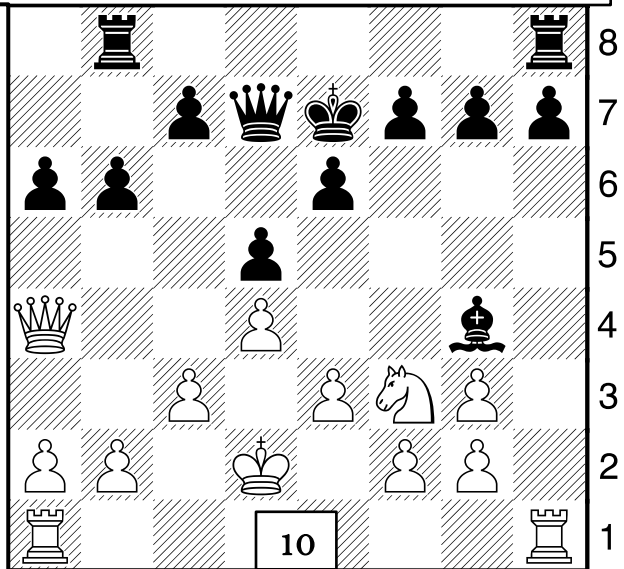
**Maine Team
Championship
March 7:
Bangor**

When you have multiple moves that are checks and/or captures order & position matter!

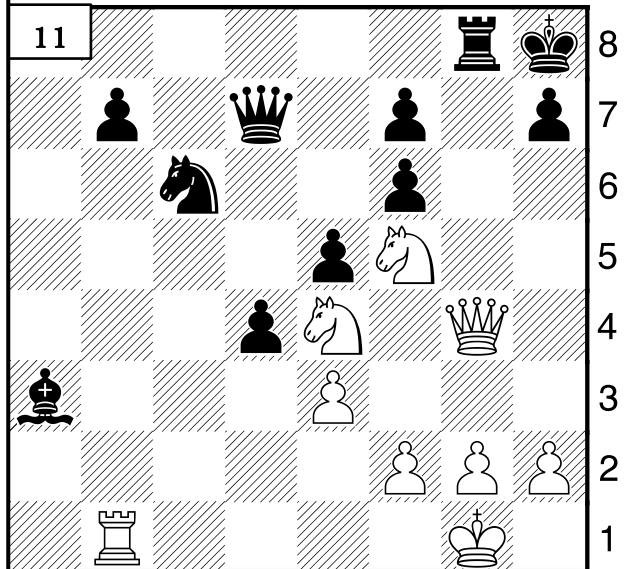
These diagrams are pictures of the puzzles we do in class. I'd love it if you'd go over them with your child!

7: Bd4, Qc7, BxBa7! 8: Look for captures! RxNf6? If KxRf6 then Nxe4+ winning the Q! 9: See Qe7 and Rf8? Bd6 would be great but either Q or N could take! Remove those in the way BxNe4, d5xBc4 now Bd6 wins Rf8 after Qd8! 10: QxQd7+, KxQd7, Ne5+, Kd6, NxBg4! 11: Look beyond what looks stupid! QxRg8! KxQg8, Nxf6+, Kh8, NxQd7!!! 12: Qb5 attacks K & Bc5 but Nd7 saves black. So BxNe5 remove defender, f6xBc5, now Qb5+ wins Bc5! More puzzles Hope School's athletic page: chess, downloads

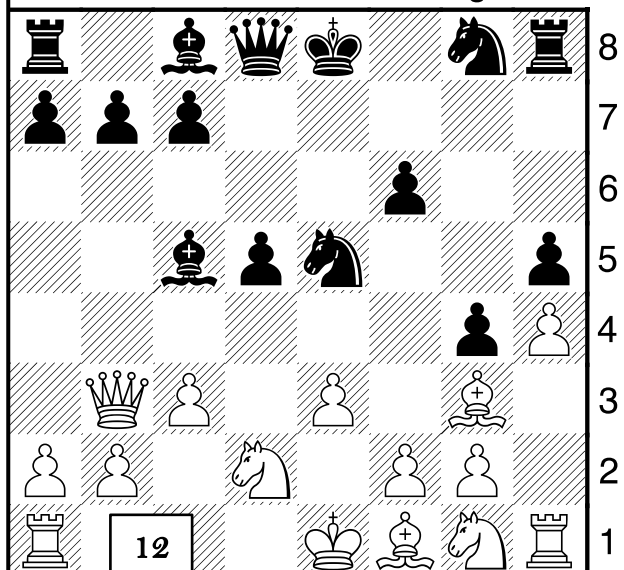
http://hes.sportsoffice.com/downloads.php?level_id=1&org_id=26&sport_id=395



a b c d e f g h



a b c d e f g h



a b c d e f g h

Get on my weekly email: BruceHaffner@gmail.com!

Hard Work Always Pays Off!